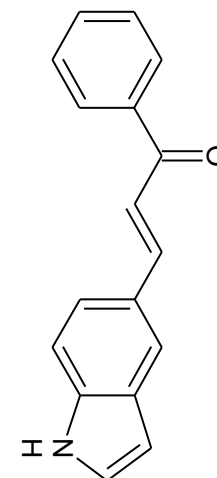
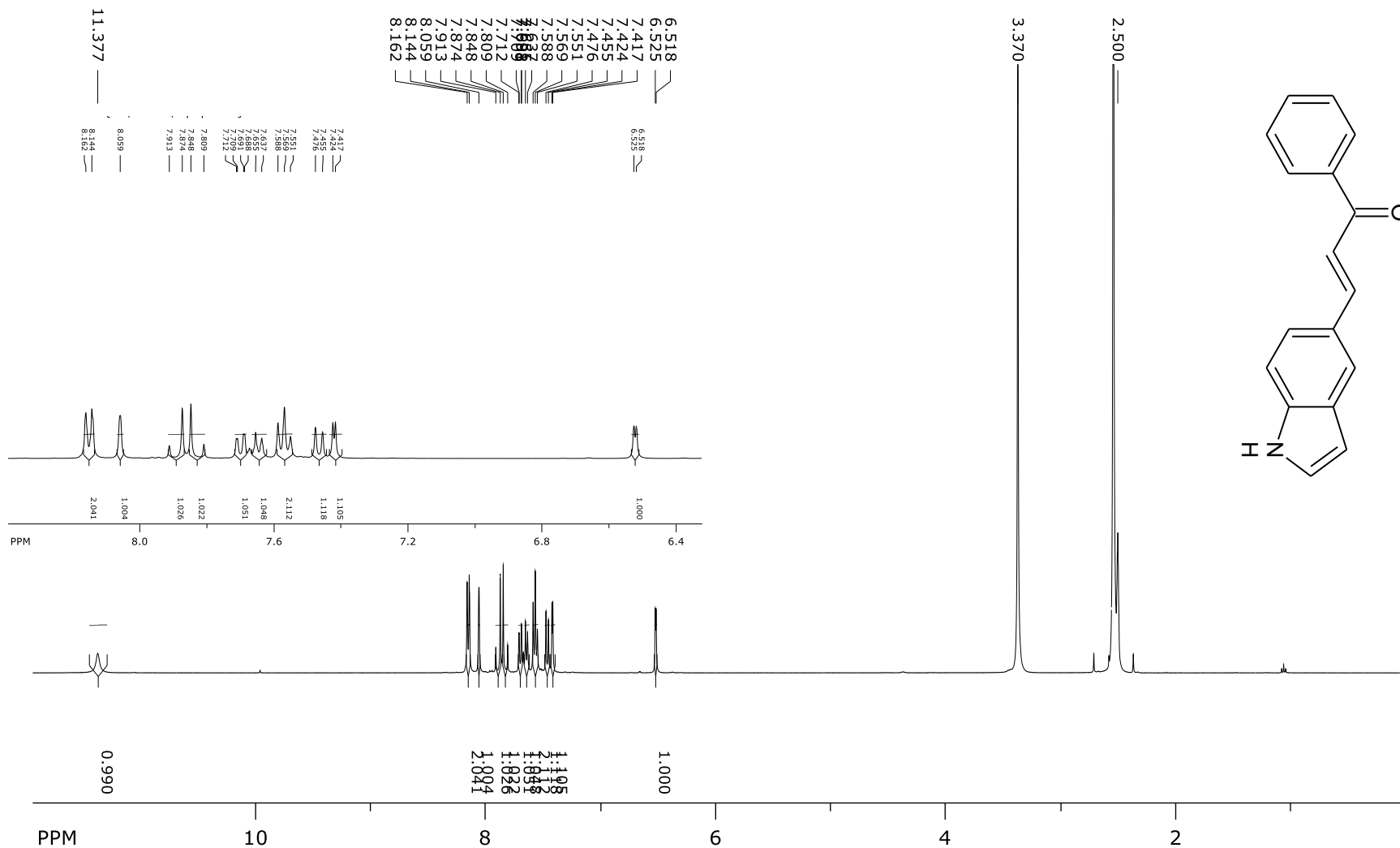
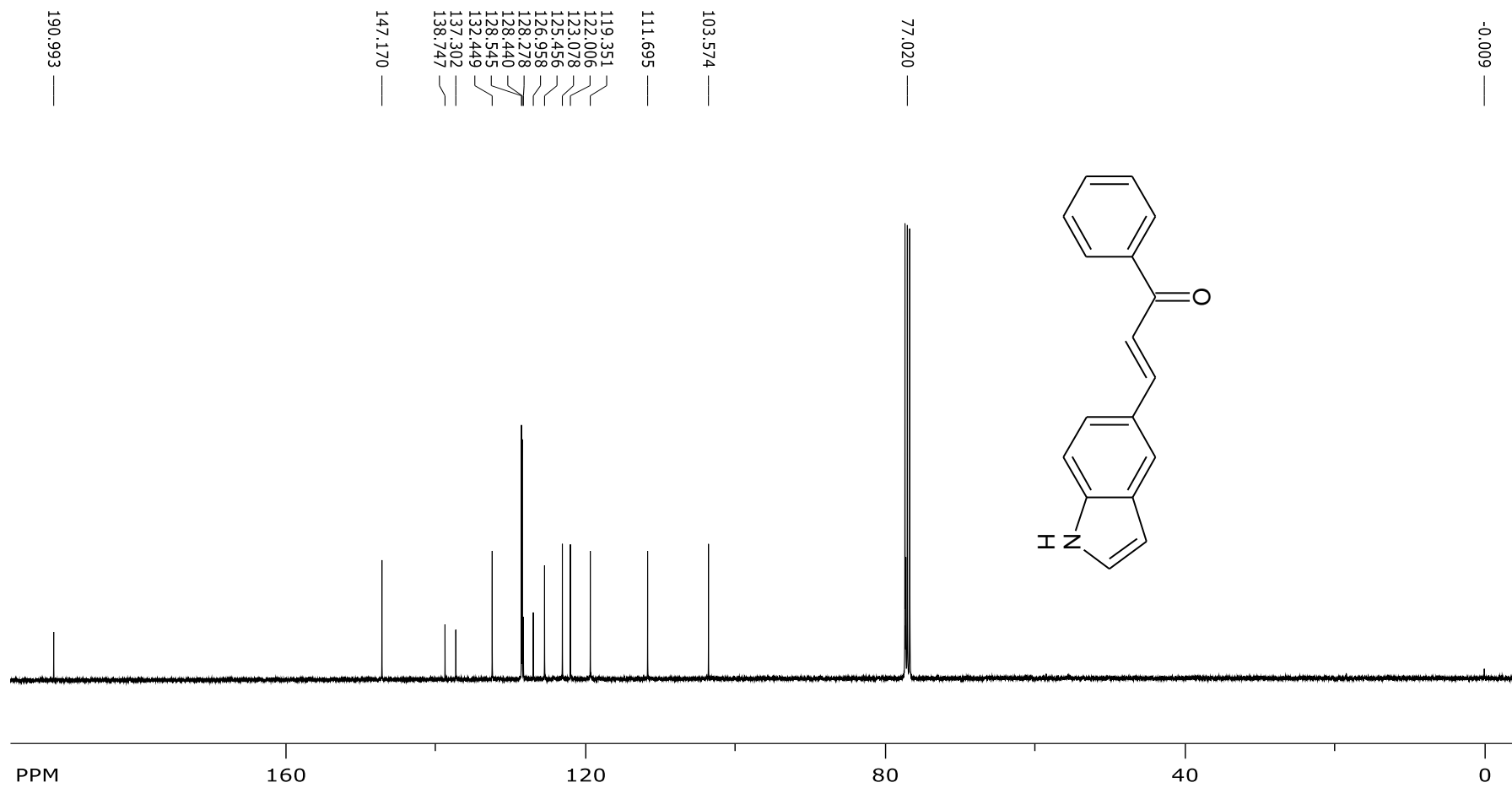


Spectrum 1: ¹H NMR Compound 1A

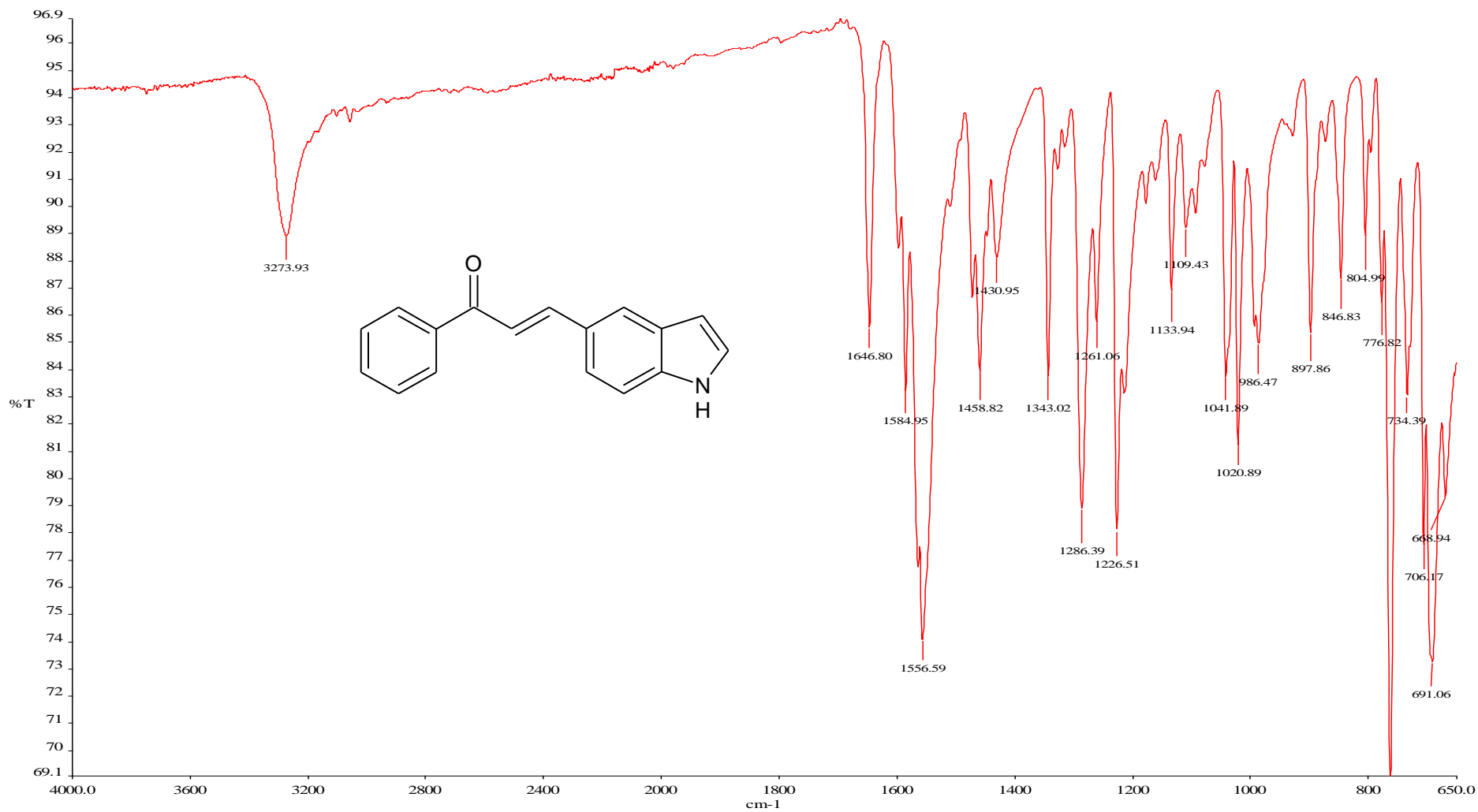
SpinWorks 4:
 PROTON DMSO {C:\Bruker\TopSpin3.2} JJ-LovetoneMusakwa 14



Spectrum 2: ¹³C NMR Compound 1A



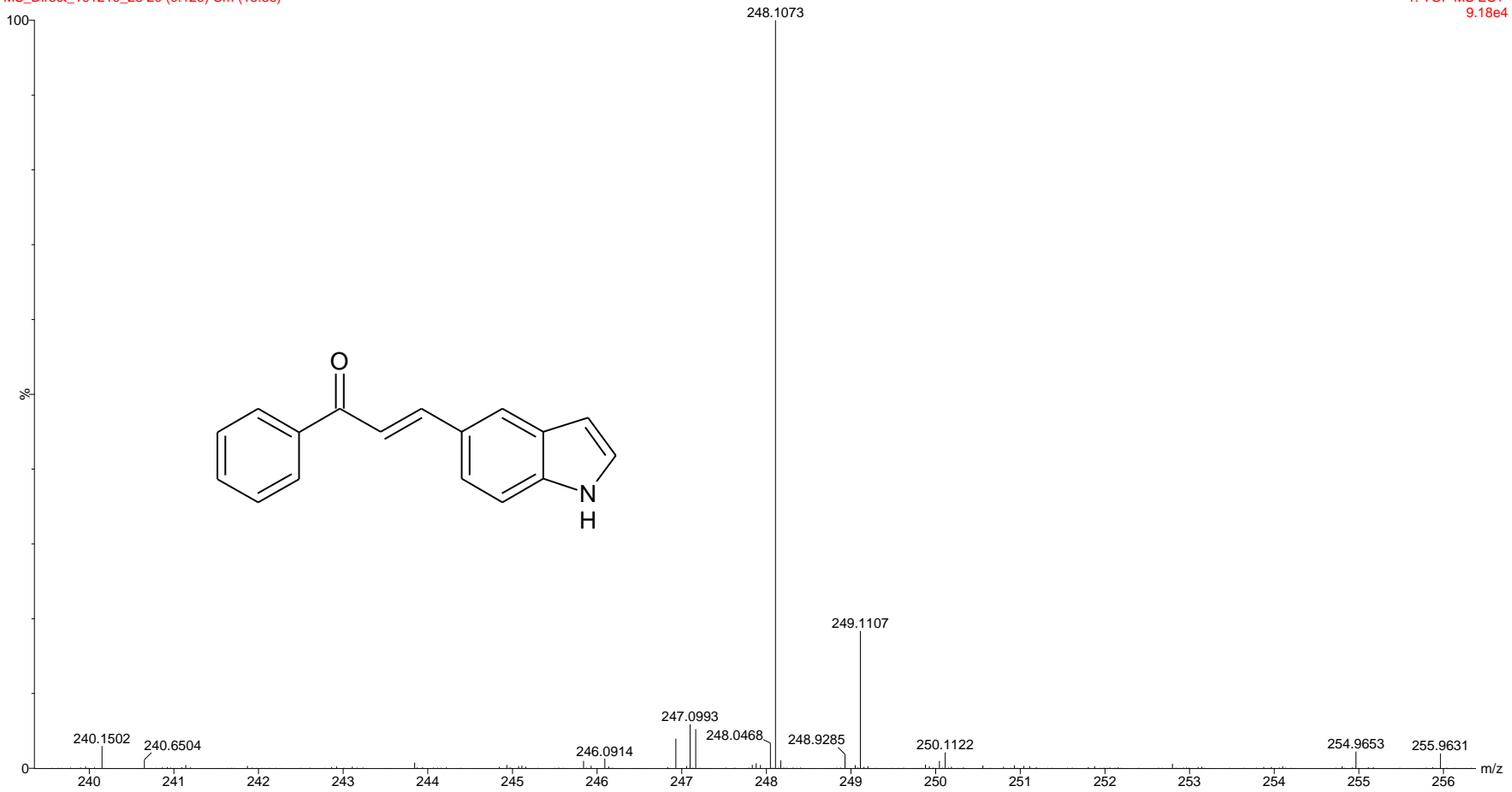
Spectrum 3: IR compound **1A**



Spectrum 4: MS compound 1A

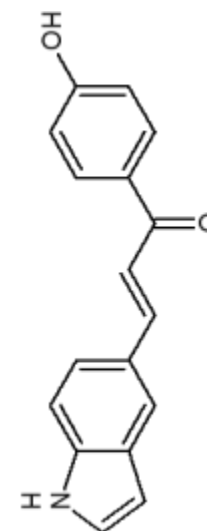
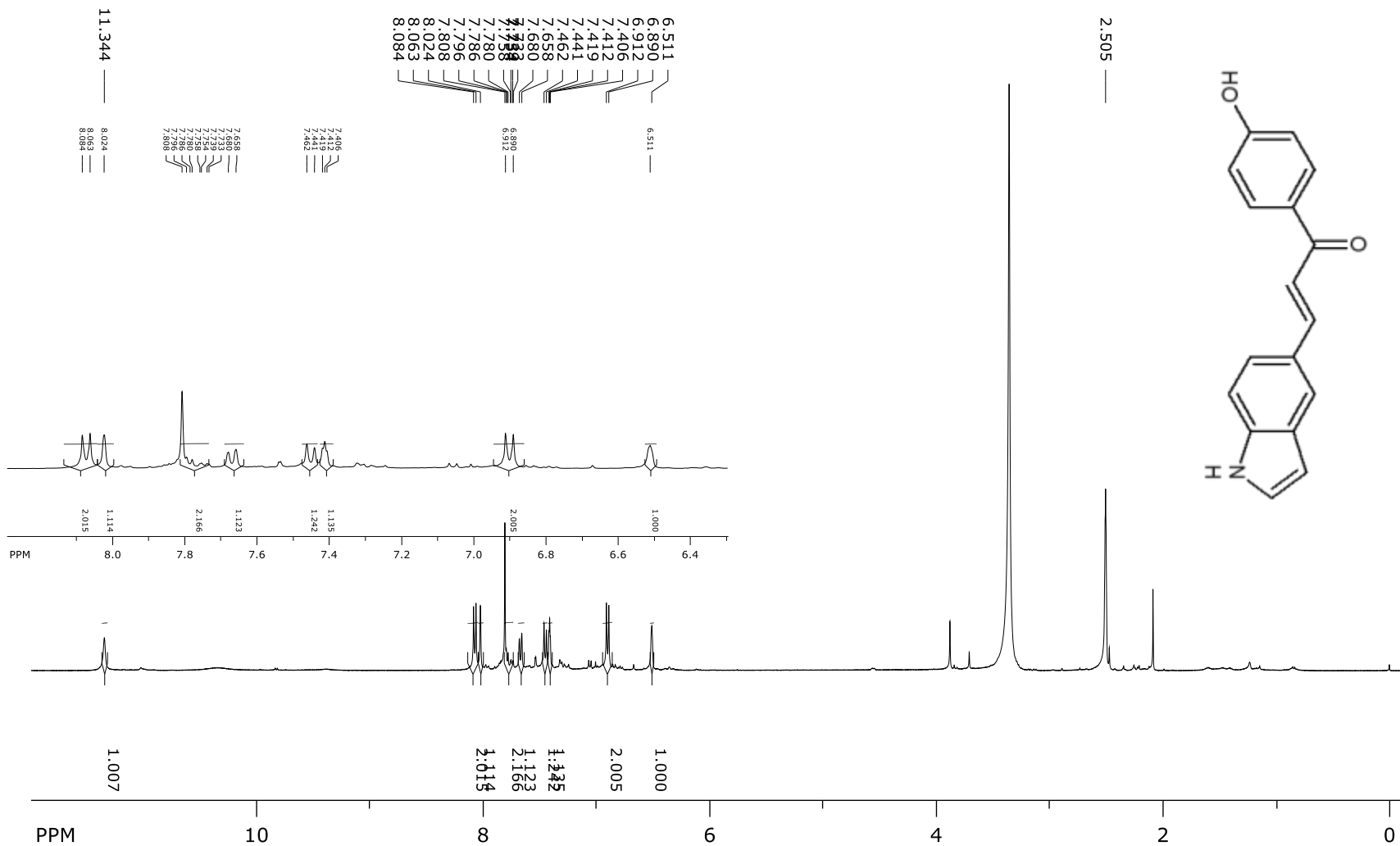
LM 1A
MS_Direct_191210_28 20 (0.129) Cm (15:36)

1: TOF MS ES+
9.18e4

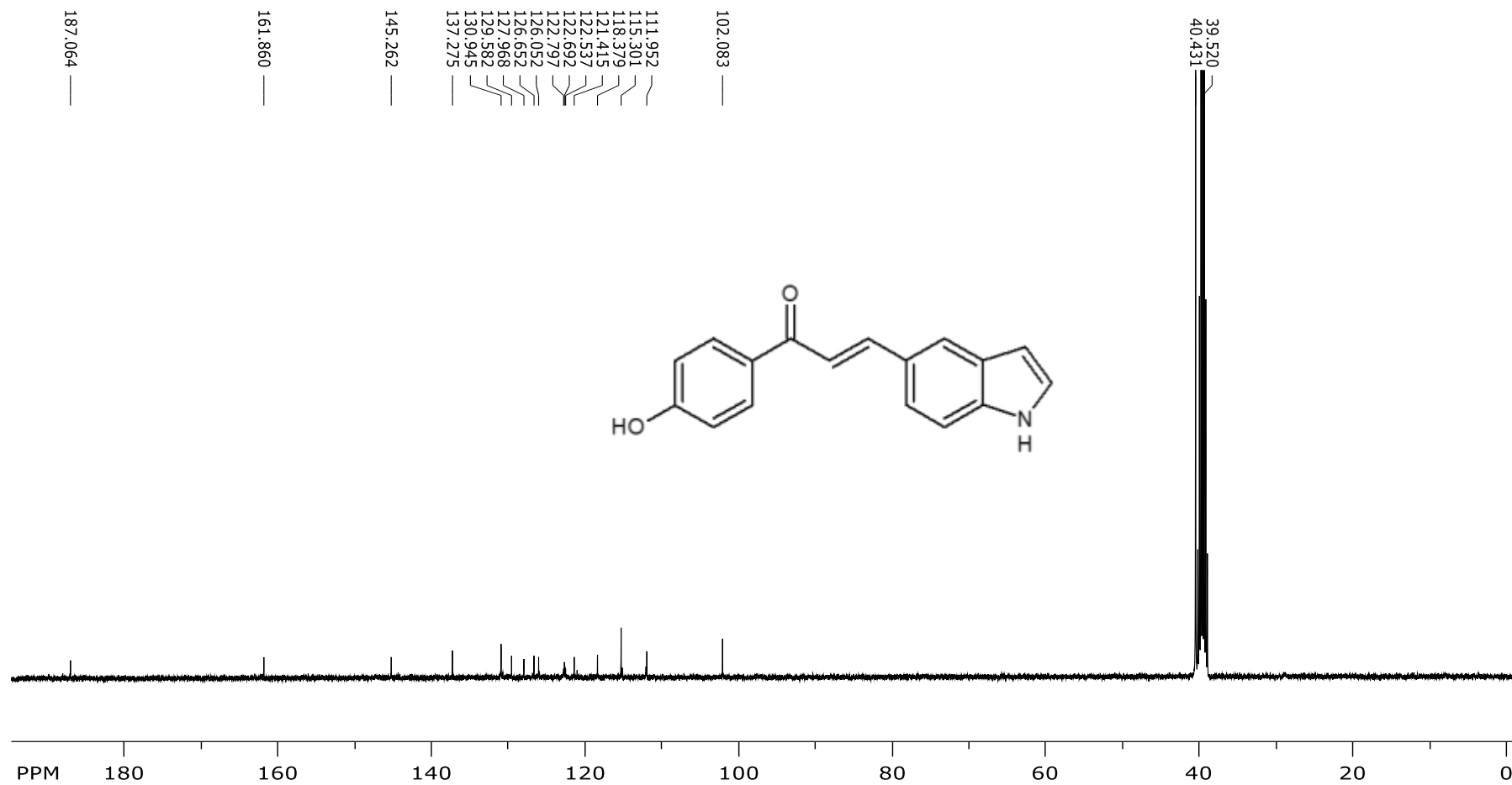


Spectrum 5: ¹H NMR Compound **1B**

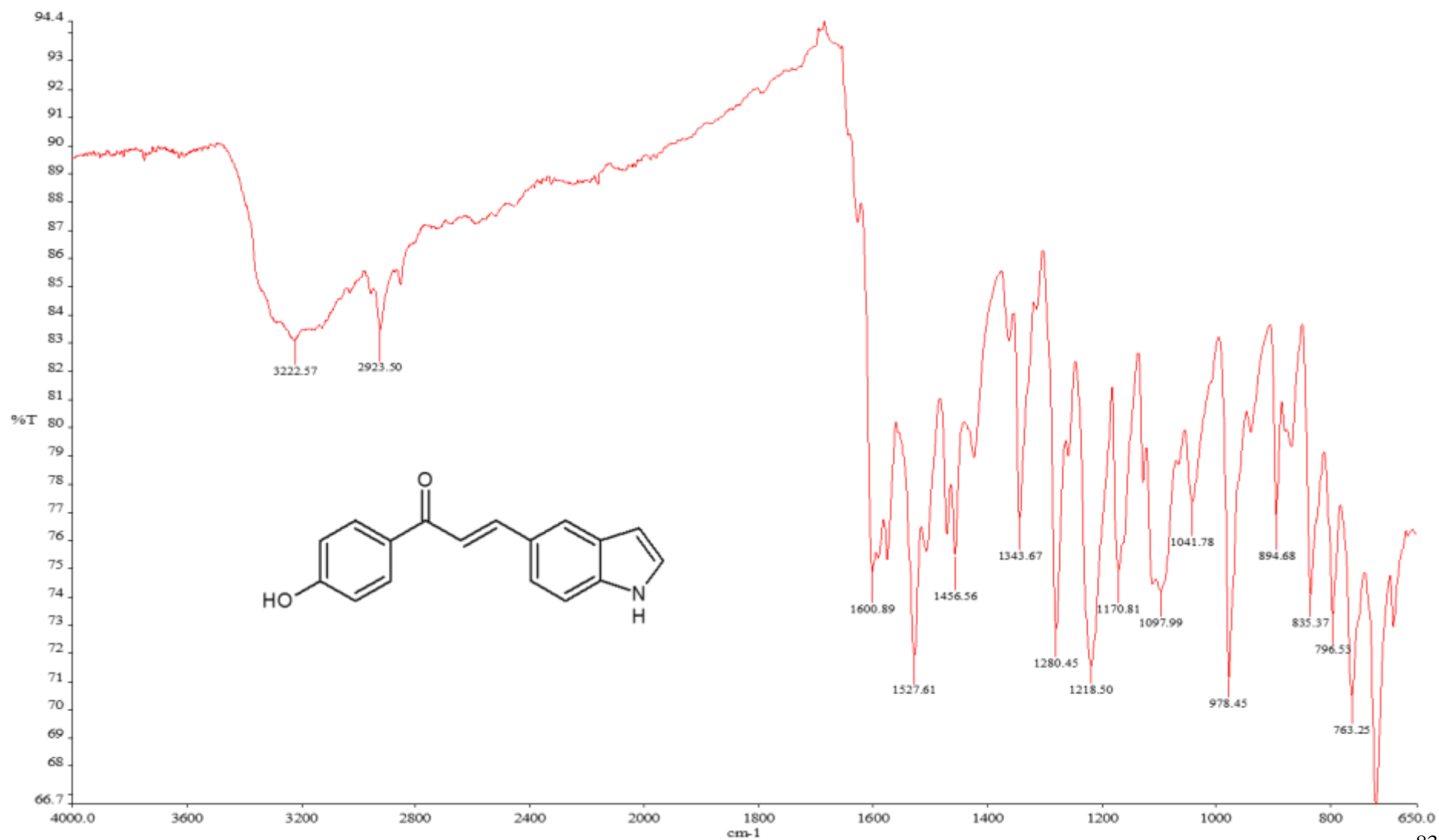
SpinWorks 4:
 PROTON DMSO {C:\Bruker\TopSpin3.2} JJ-LovetoneMusakwa 19



Spectrum 6: ^{13}C NMR Compound **1B**



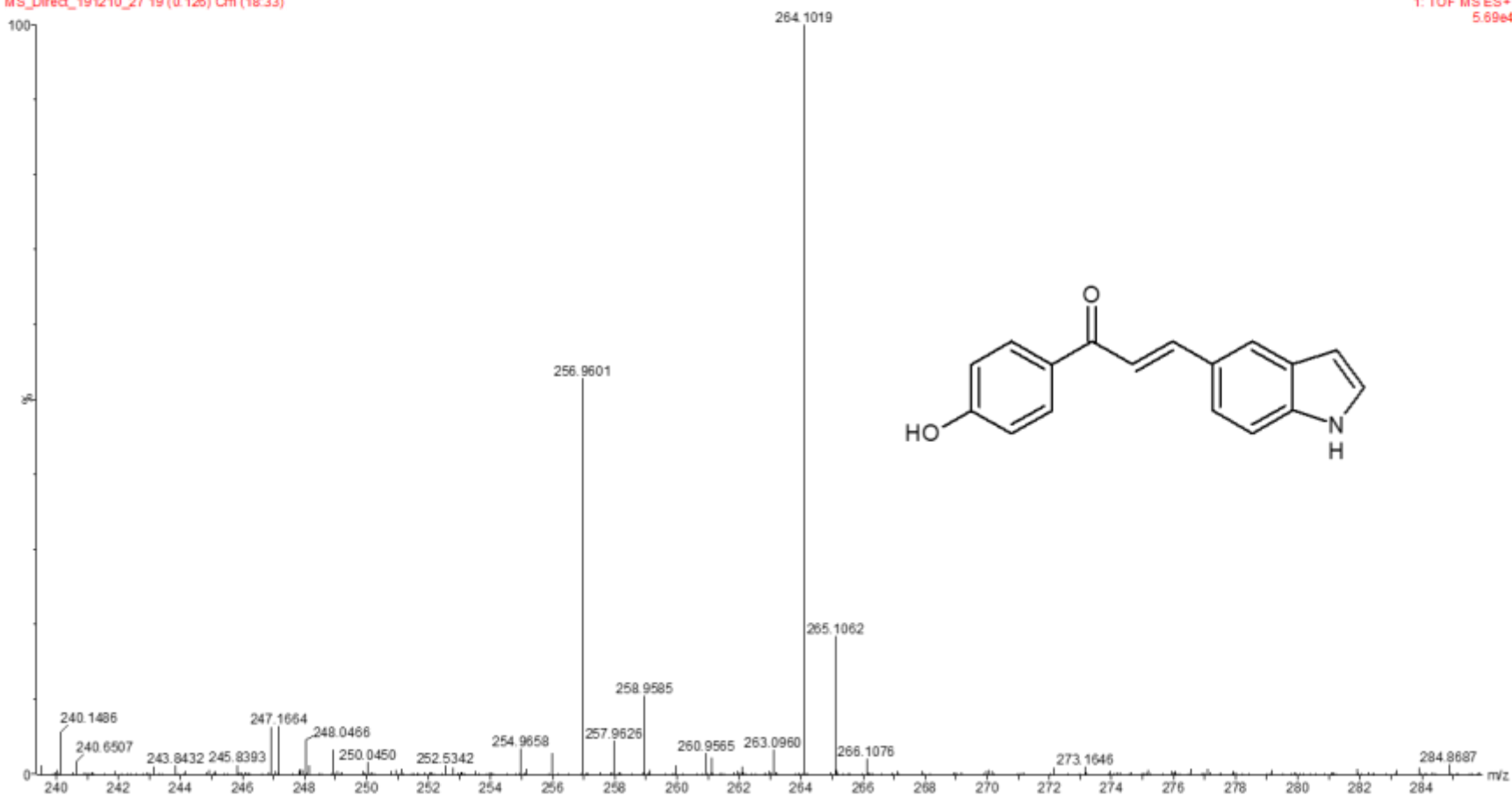
Spectrum 7: IR Compound **1B**



Spectrum 8: MS Compound 1B

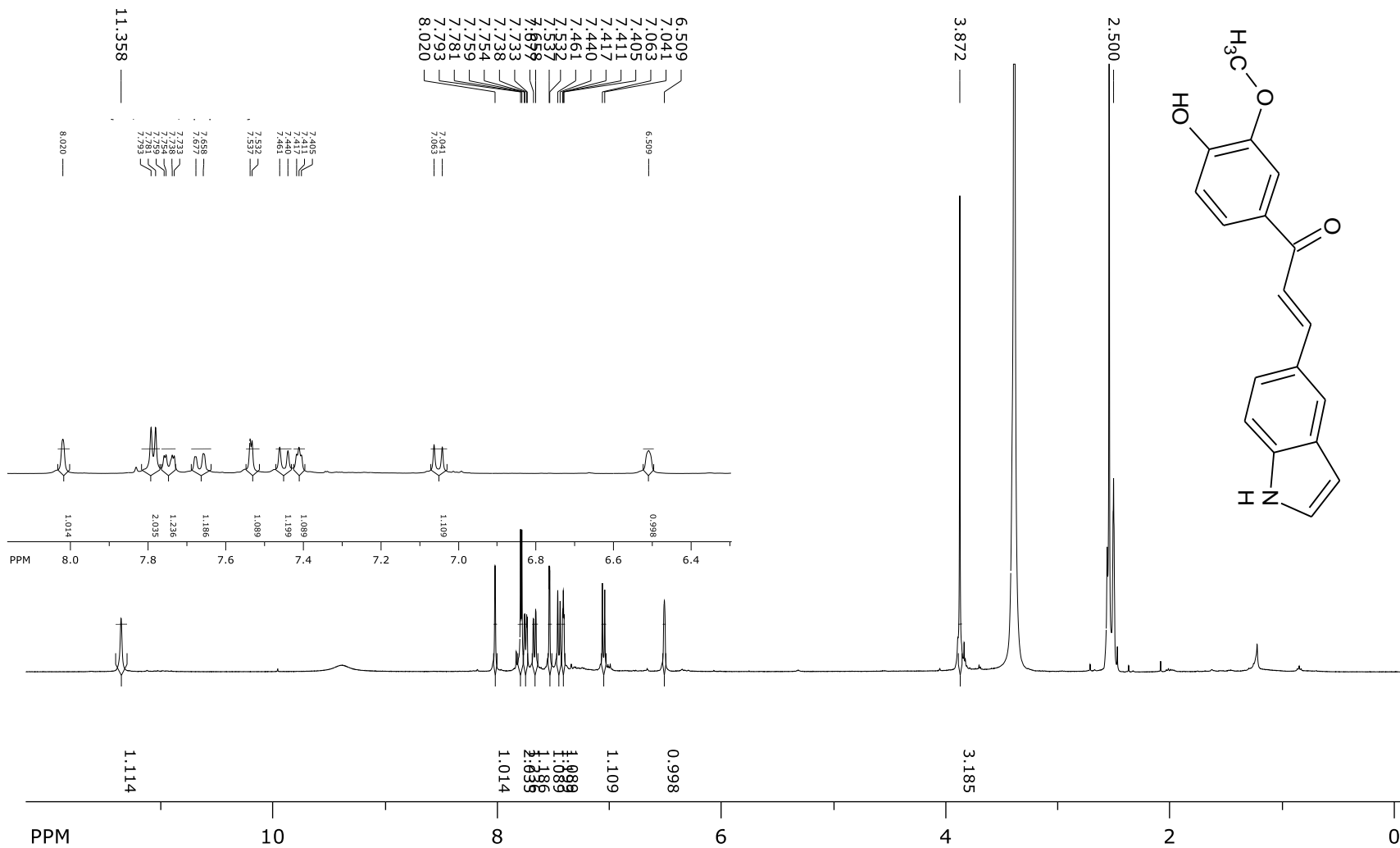
LM 1B
MS_Direct_191210_27 19 (0.126) Cm (18.33)

1: TOF MSES+
5.69e4

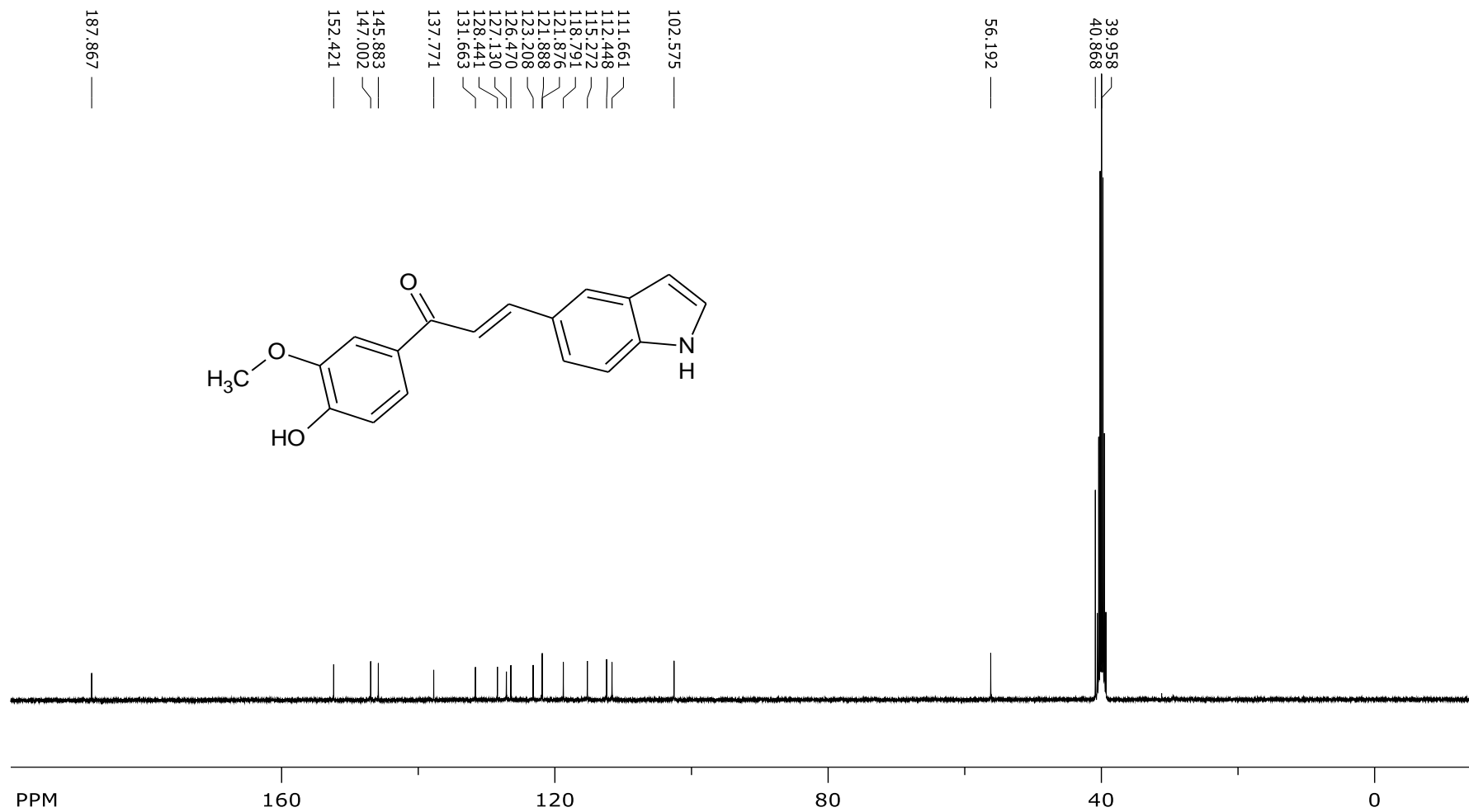


Spectrum 9: ¹H NMR Compound 1C

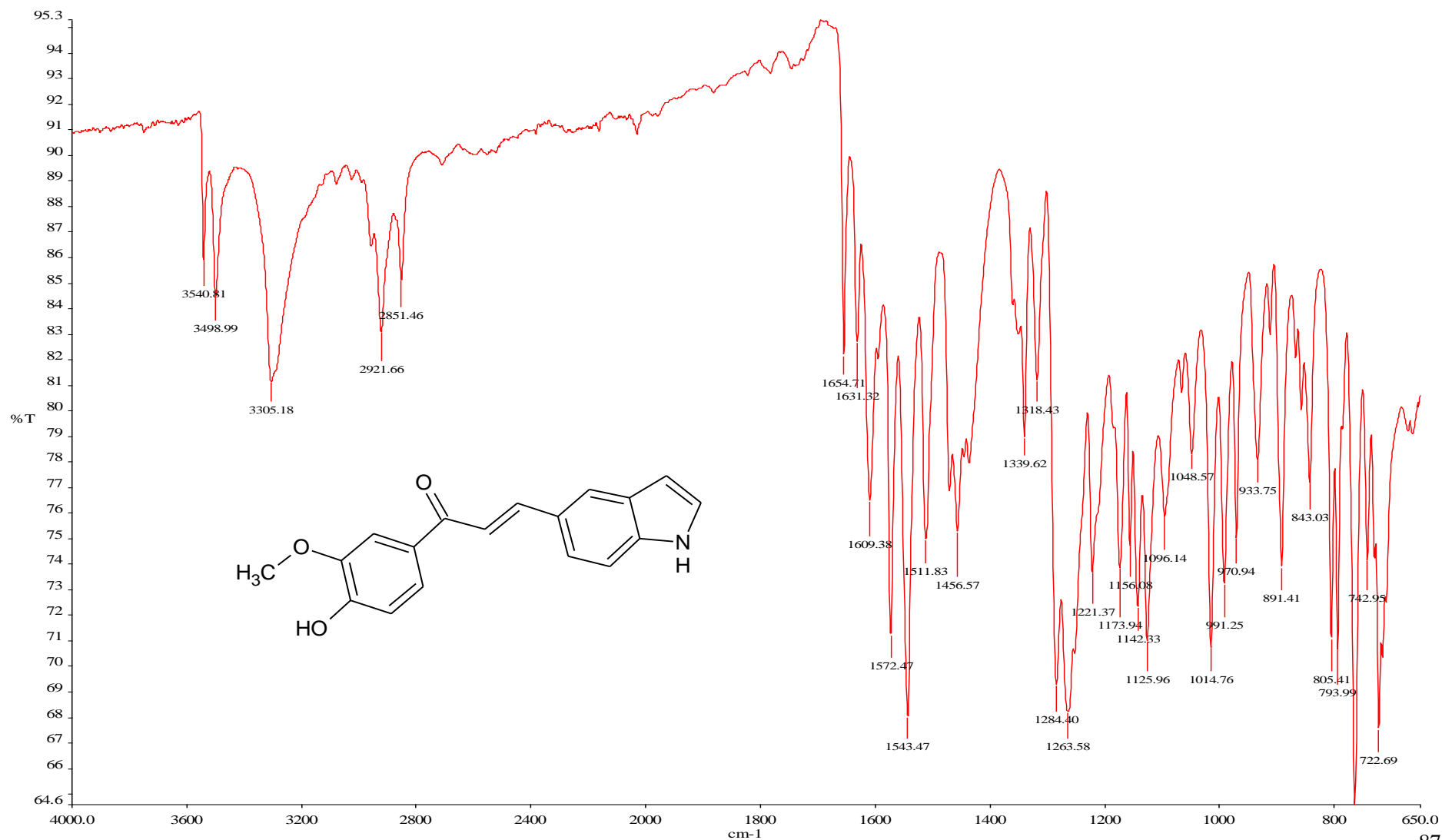
SpinWorks 4:
 PROTON DMSO {C:\Bruker\TopSpin3.2} JJ-LovetoneMusakwa 20



Spectrum 10: ¹³C NMR Compound 1C



Spectrum 11: IR Compound 1C

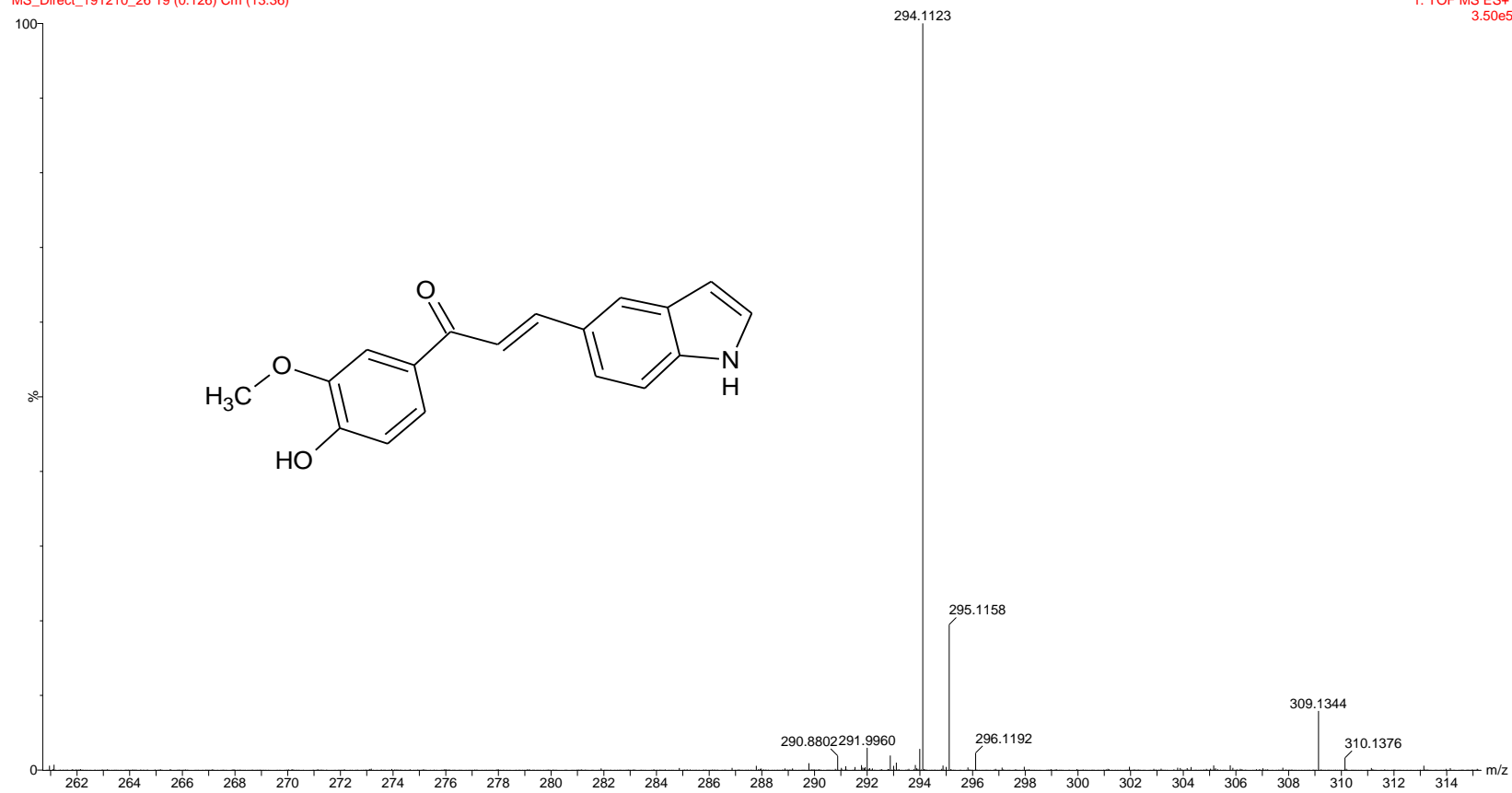


Spectrum 12: MS Compound 1C

LM 1C

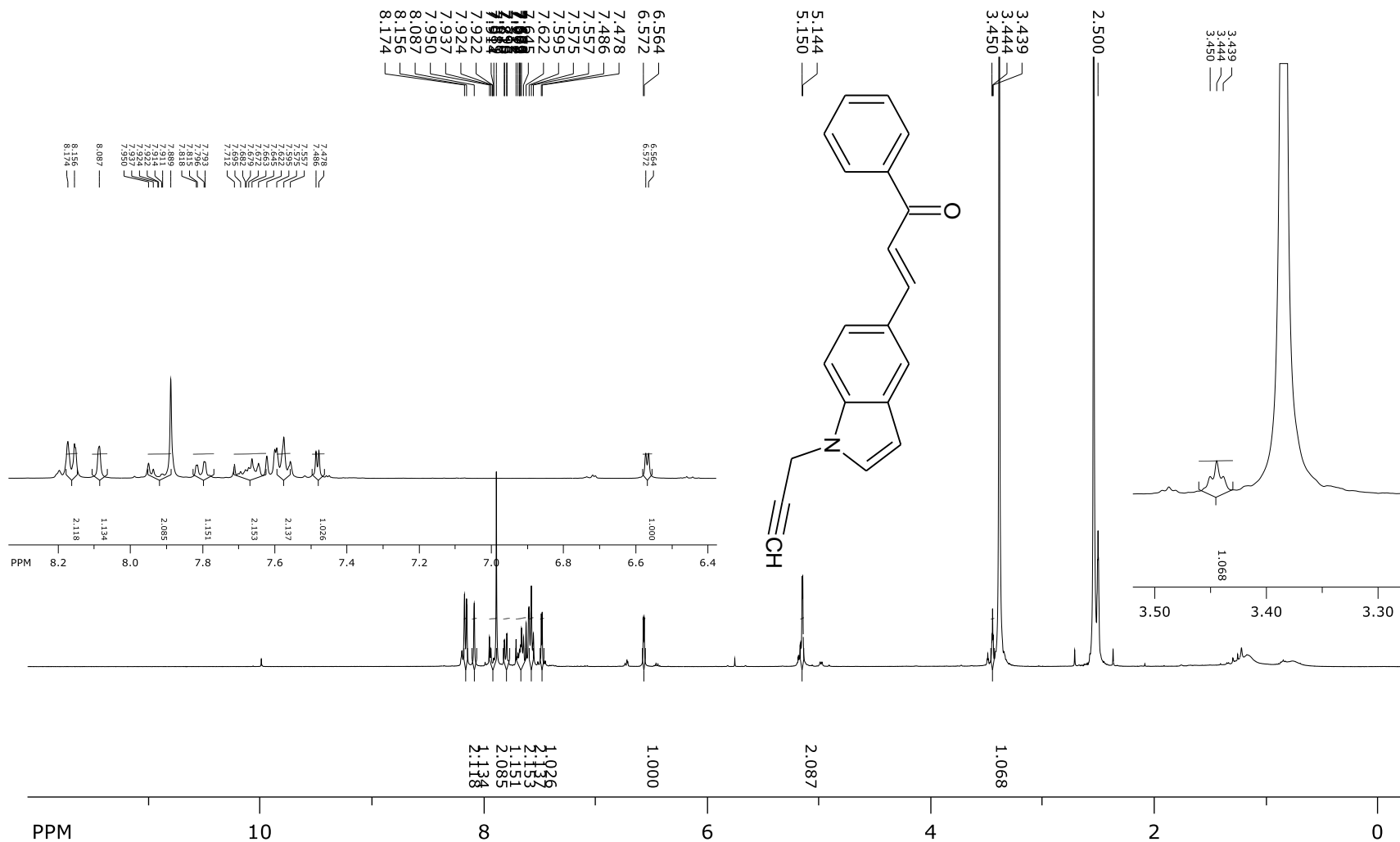
MS_Direct_191210_26 19 (0.126) Cm (13:36)

1: TOF MS ES+
3.50e5

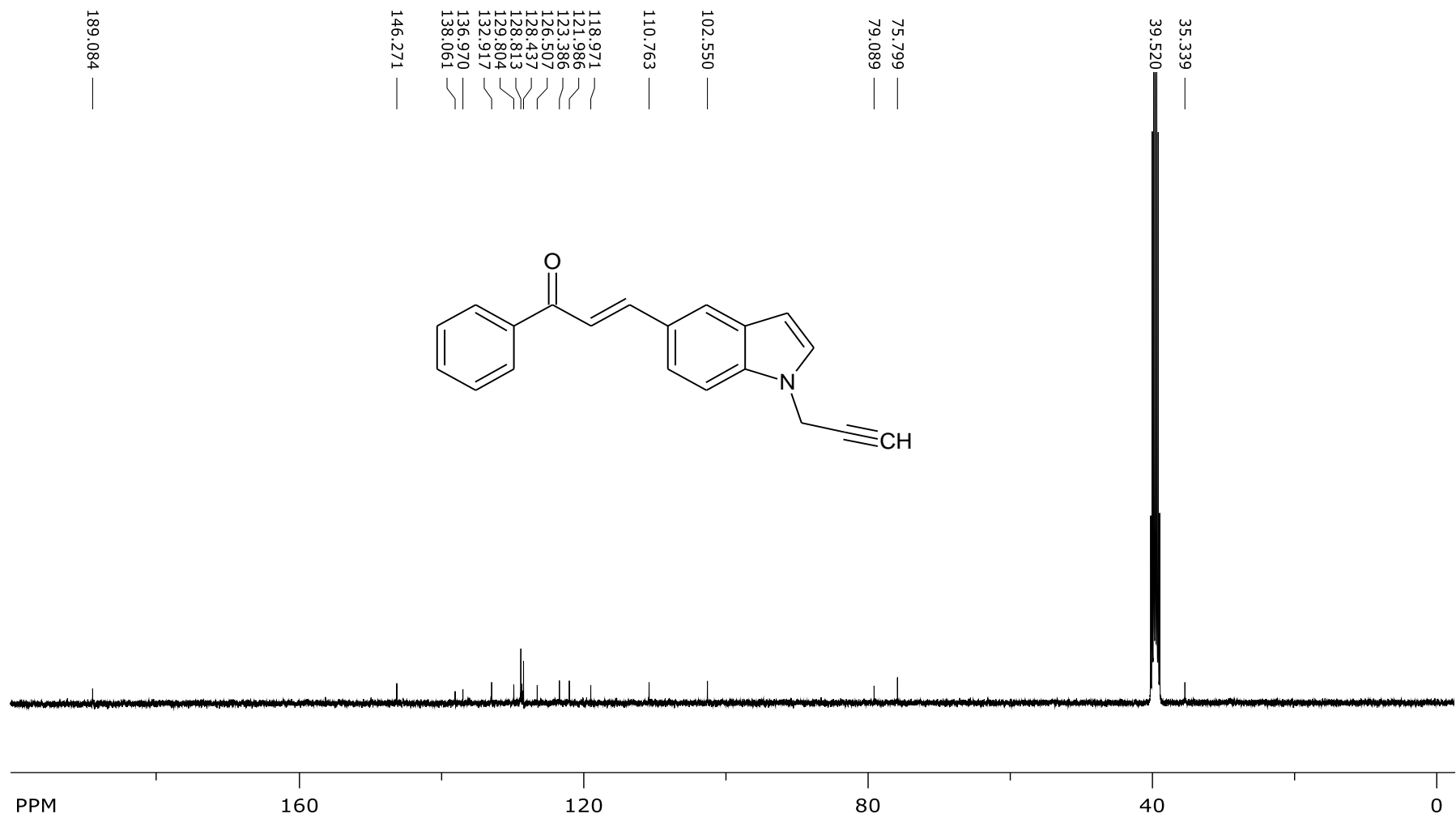


Spectrum 13: ¹H NMR Compound 2A

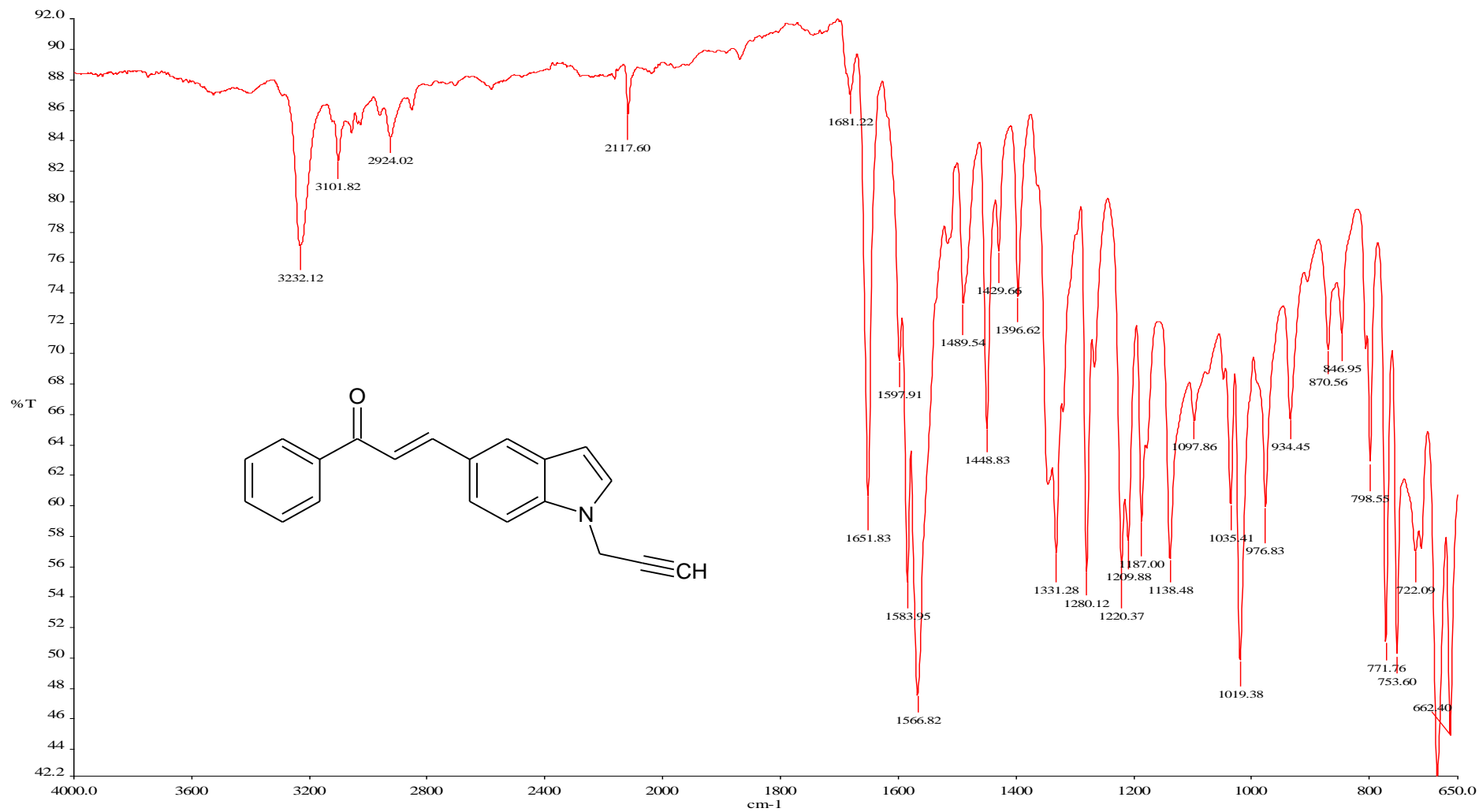
SpinWorks 4:
 PROTON DMSO {C:\Bruker\TopSpin3.2} JJ-LovetoneMusakwa 1



Spectrum 14: ^{13}C NMR Compound 2A



Spectrum 15: IR Compound 2A

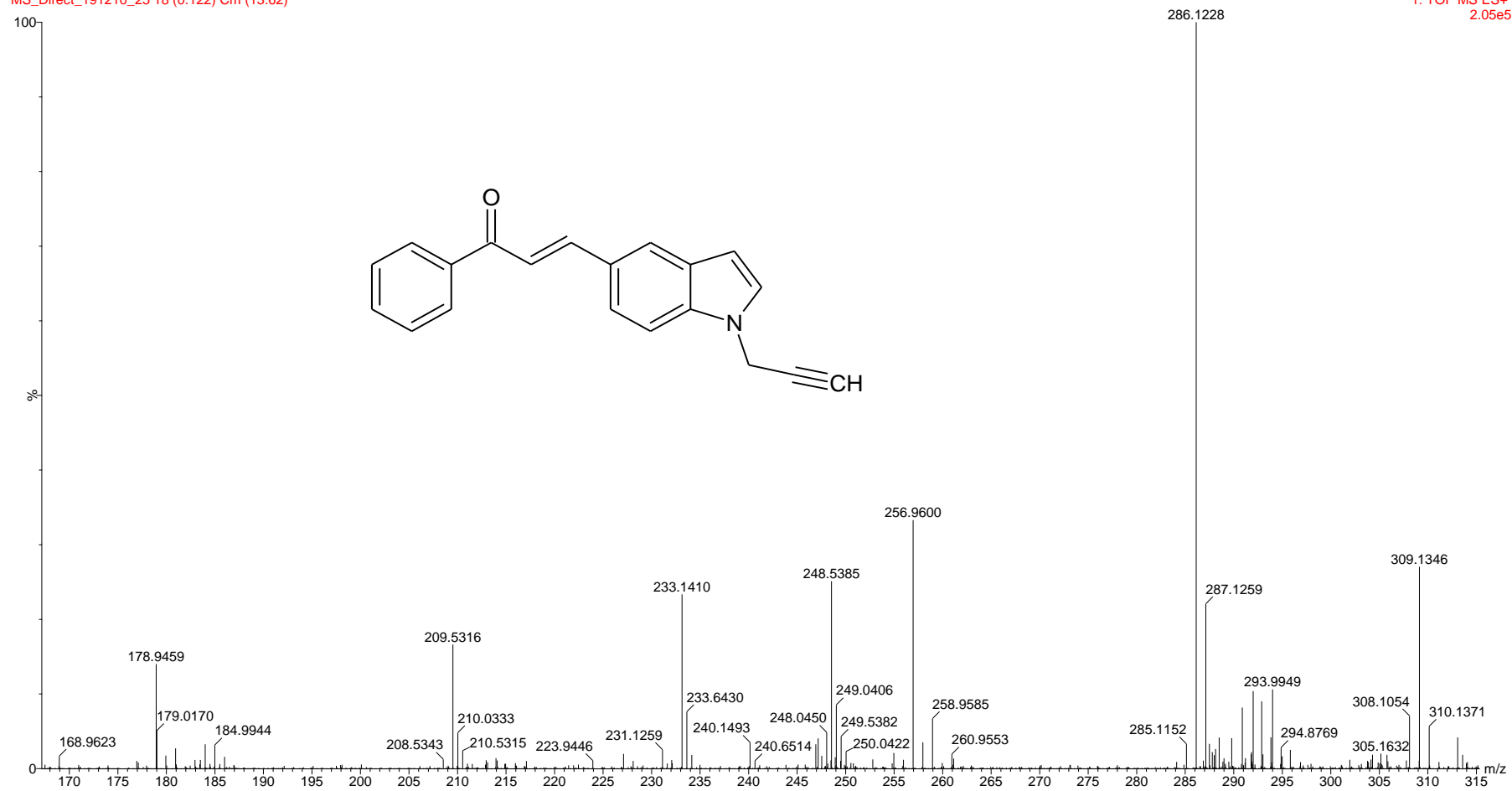


Spectrum 16: MS Compound 2A

LM 2A

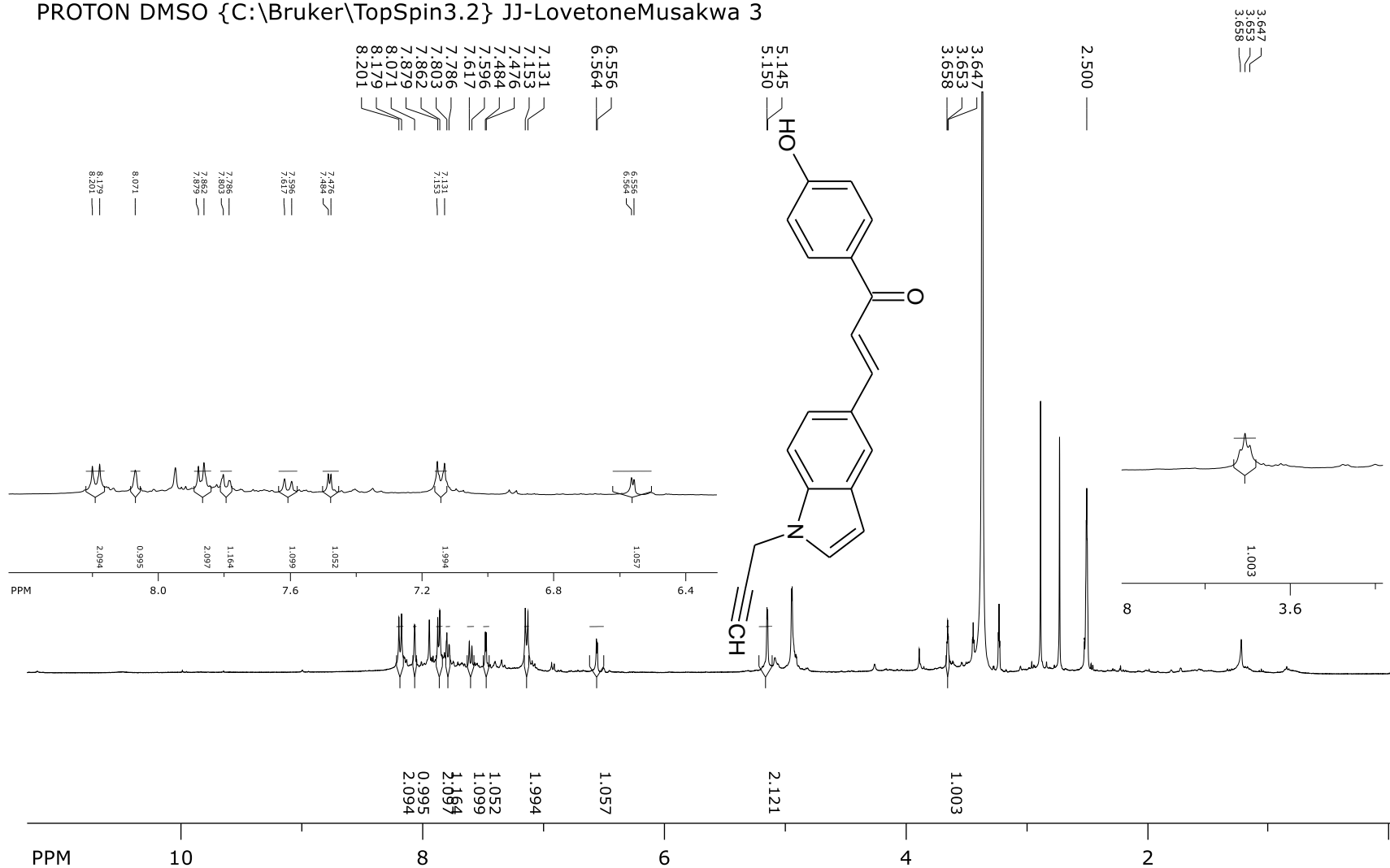
MS_Direct_191210_25 18 (0.122) Cm (13:62)

1: TOF MS ES+
2.05e5

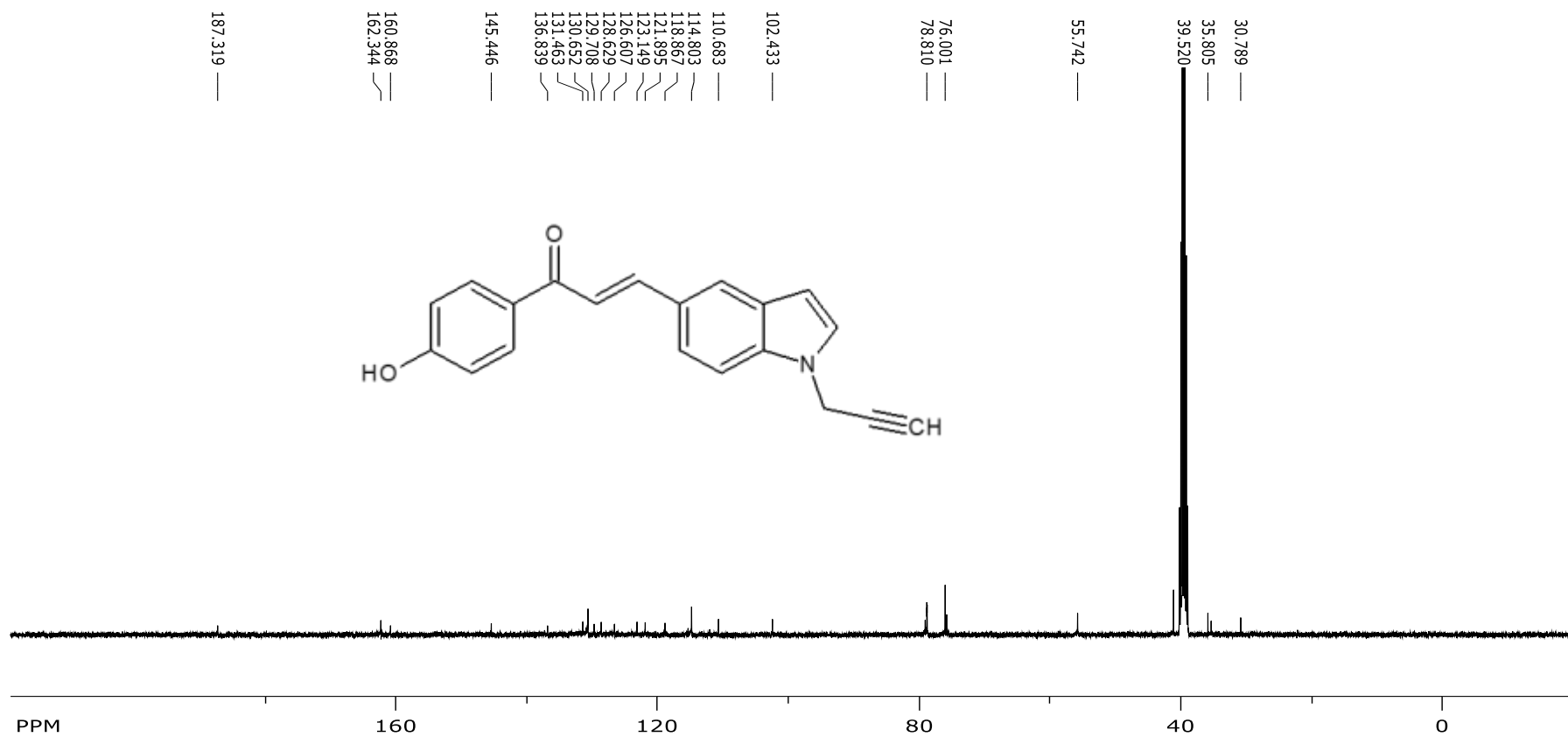


Spectrum 17: ¹H NMR Compound 2B

SpinWorks 4:
 PROTON DMSO {C:\Bruker\TopSpin3.2} JJ-LovetoneMusakwa 3



Spectrum 18: ¹³C NMR Compound **2B**



Spectrum 19: IR Compound **2B**

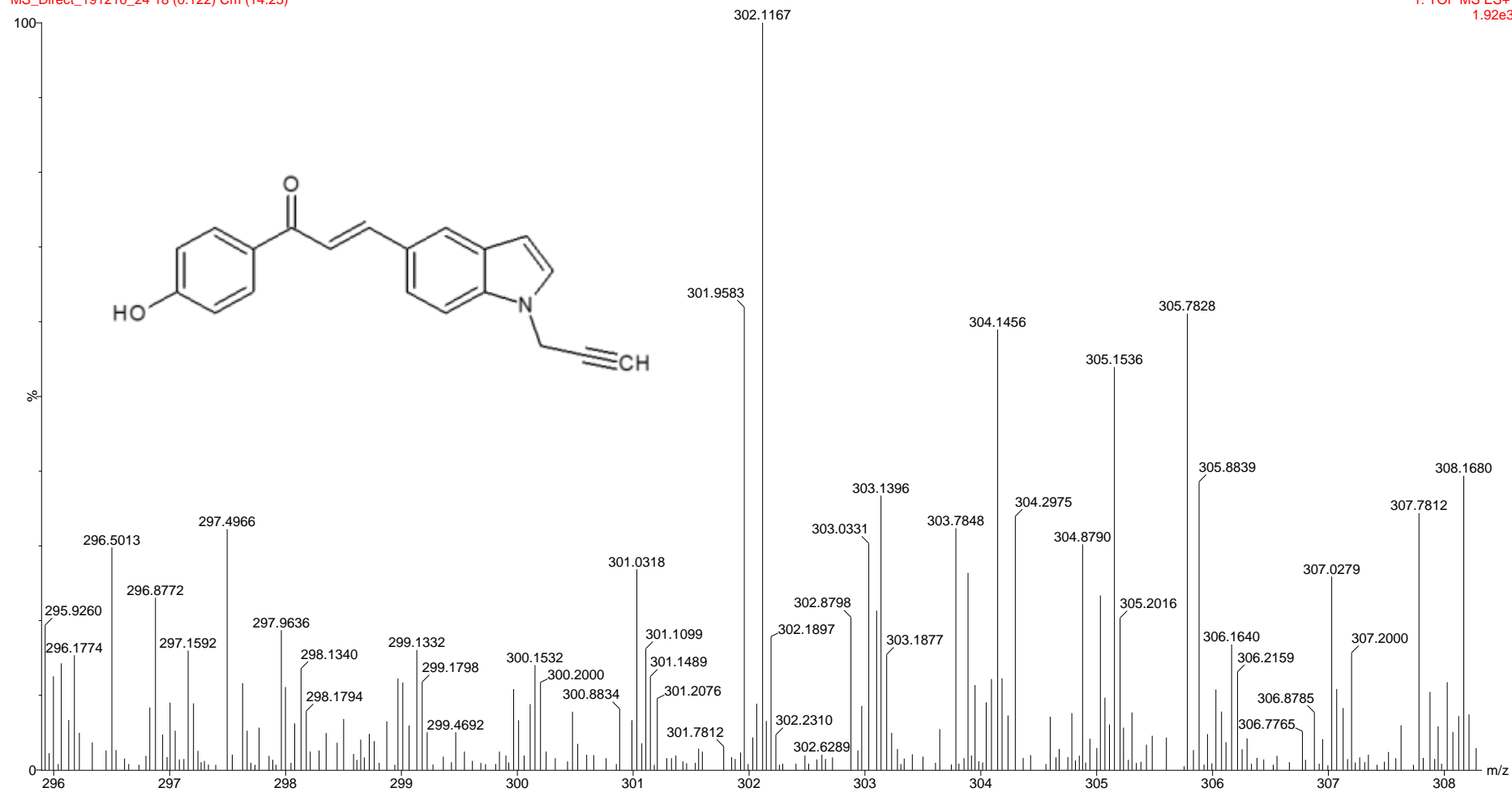


Spectrum 20: MS Compound 2B

LM 2B

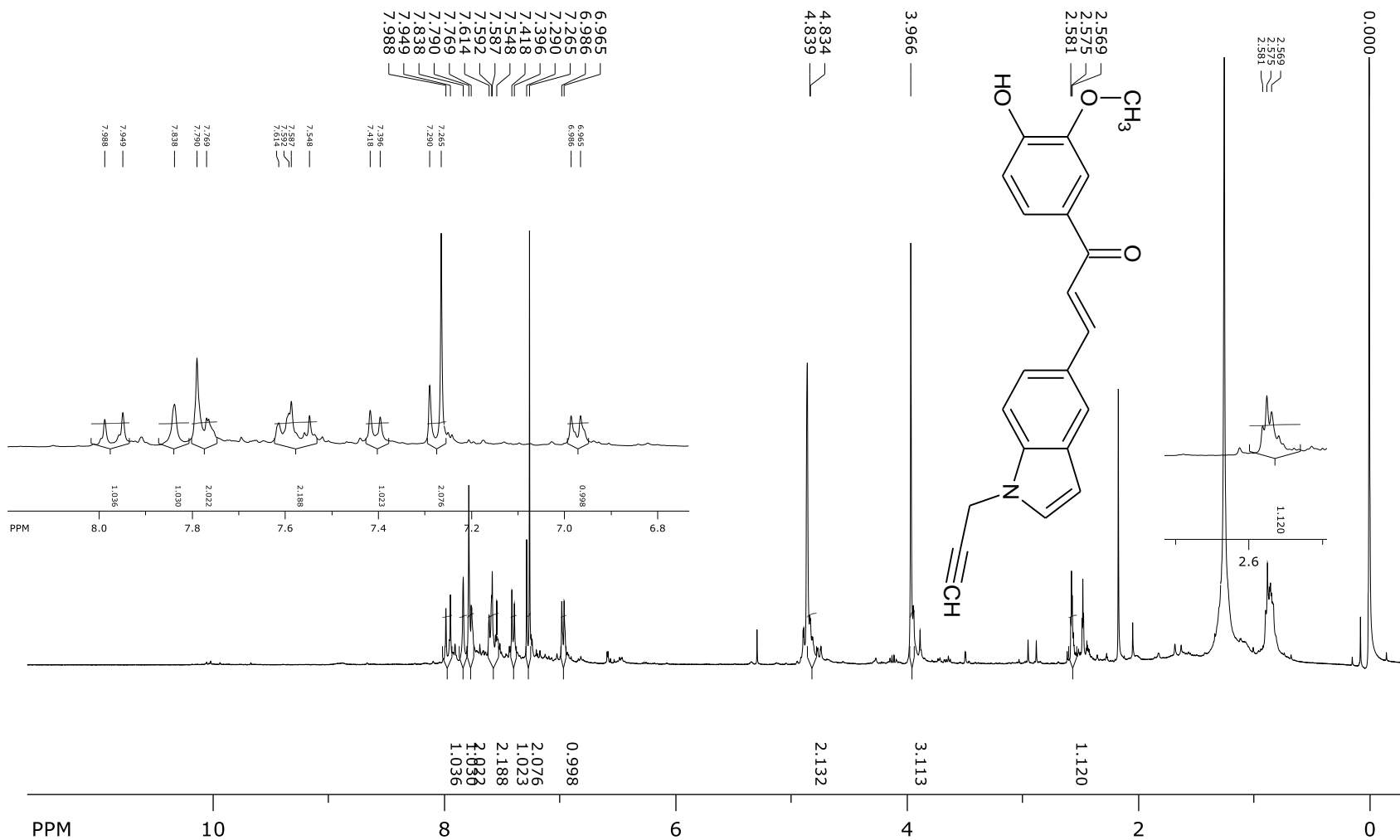
MS_Direct_191210_24 18 (0.122) Cm (14:25)

1: TOF MS ES+
1.92e3

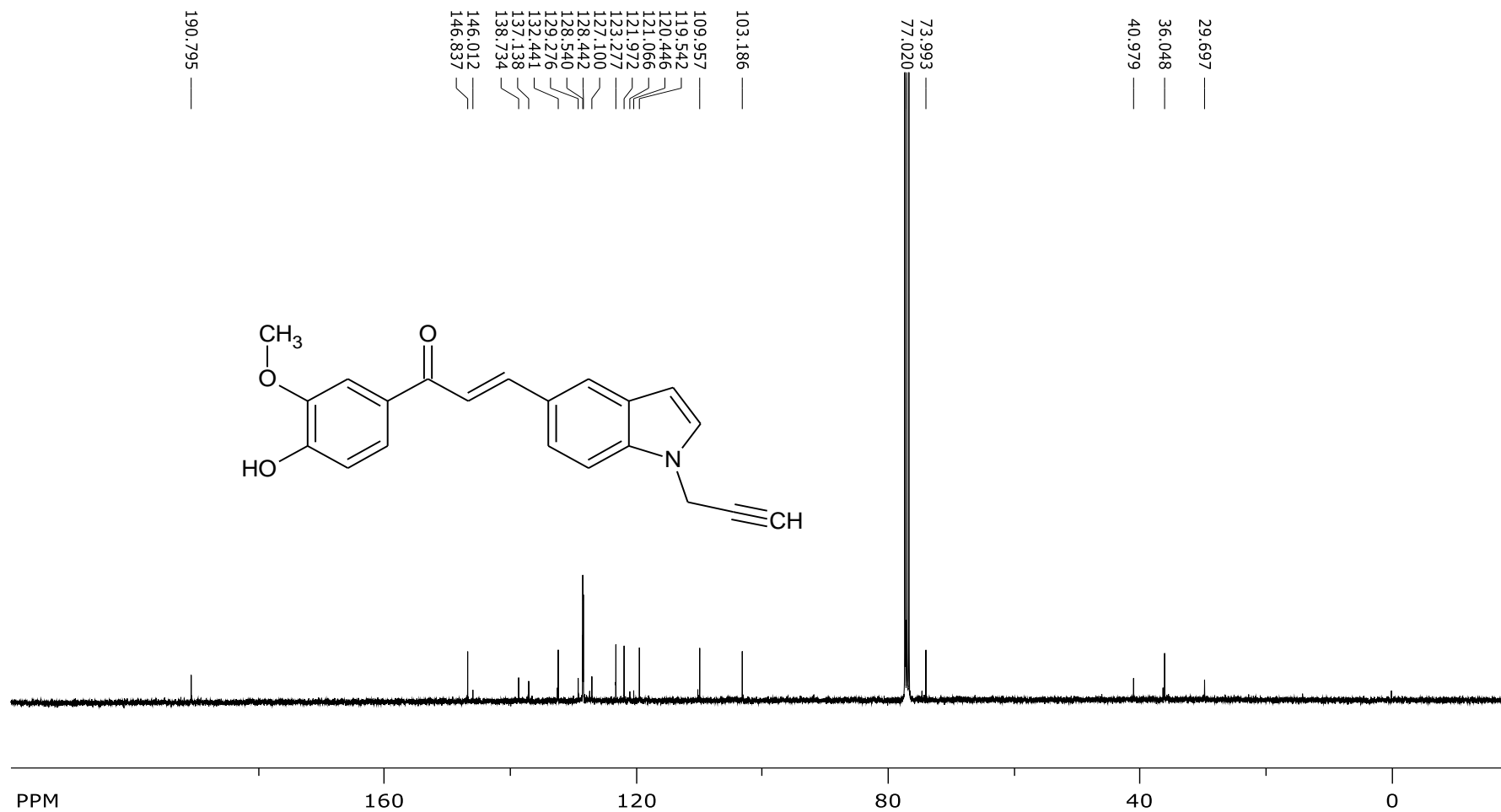


Spectrum 21: ¹H NMR Compound 2C

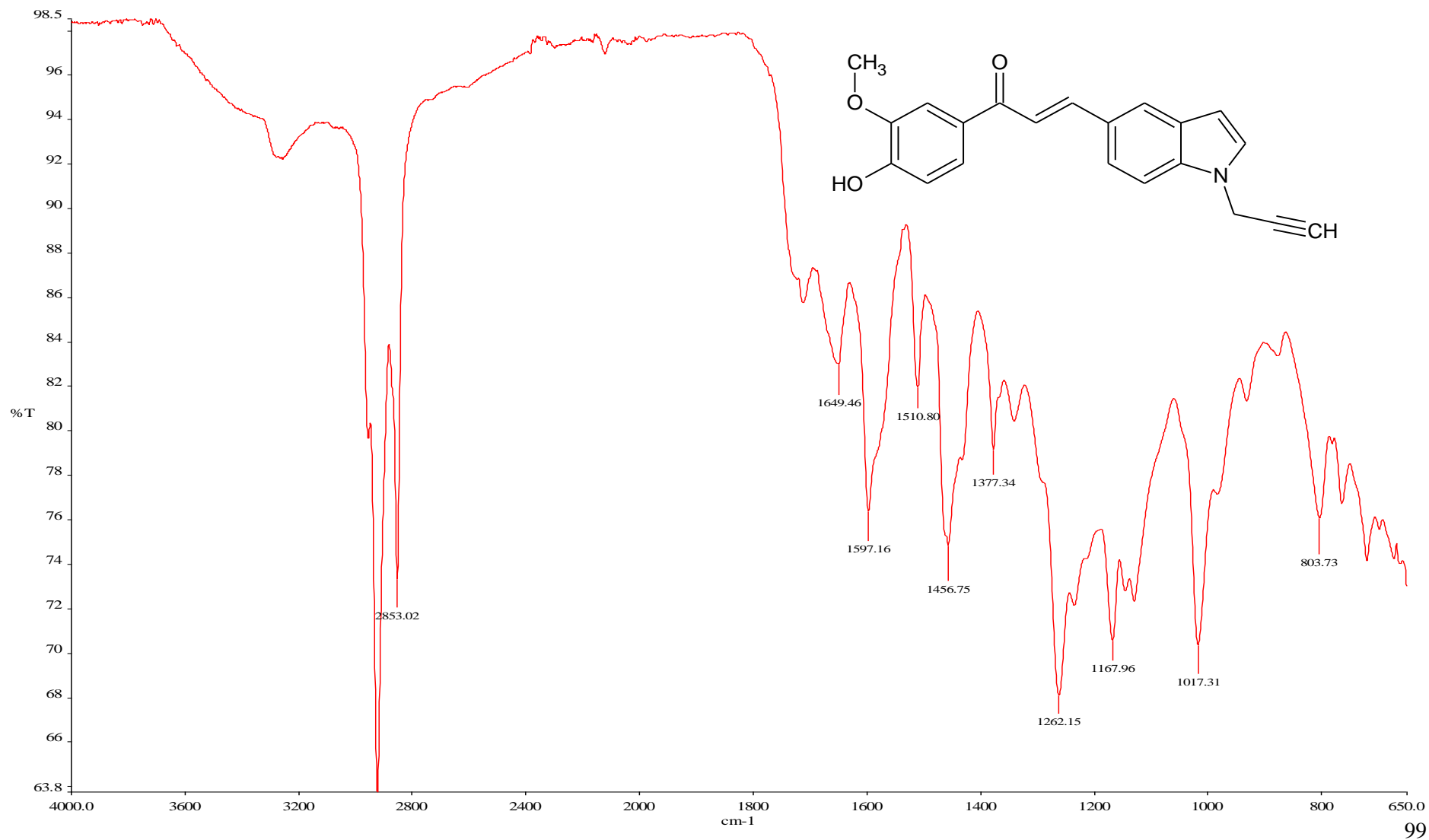
SpinWorks 4:
 PROTON CDCl₃ {C:\Bruker\TopSpin3.2} JJ-LovetoneMusakwa 22



Spectrum 22: ^{13}C NMR Compound 2C



Spectrum 23: IR Compound 2C

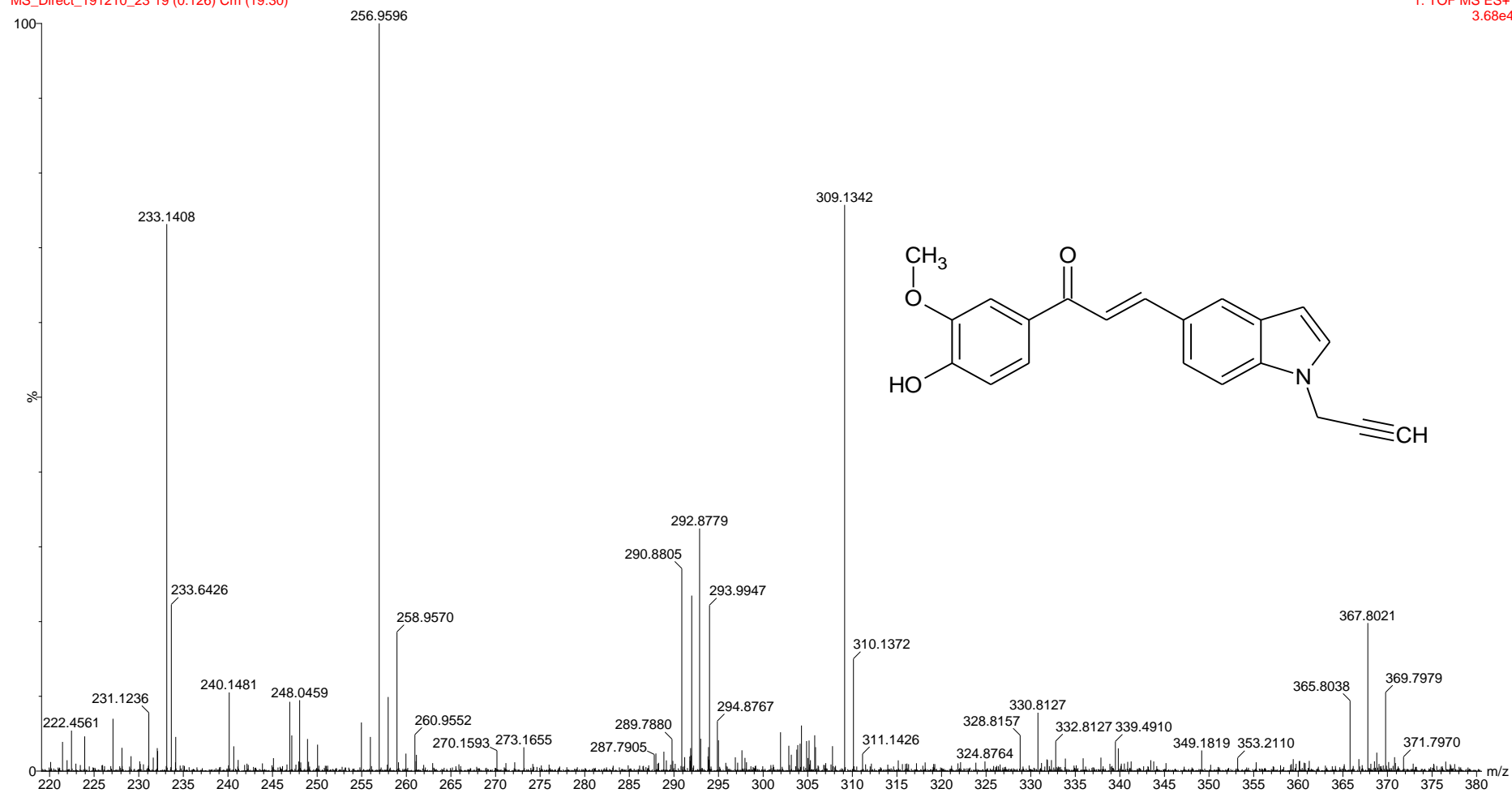


Spectrum 24: MS Compound 2C

LM 2C

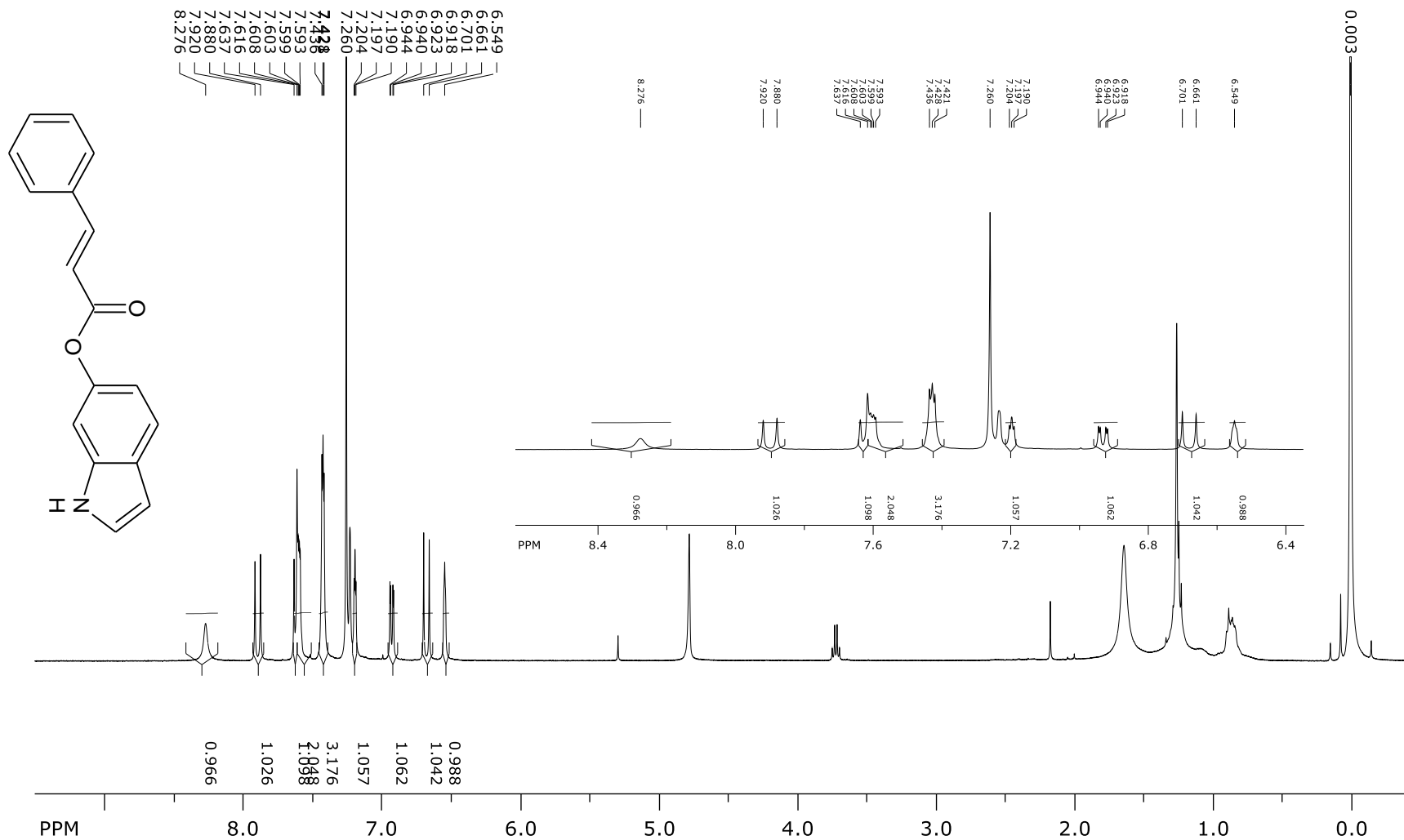
MS_Direct_191210_23 19 (0.126) Cm (19:30)

1: TOF MS ES+
3.68e4

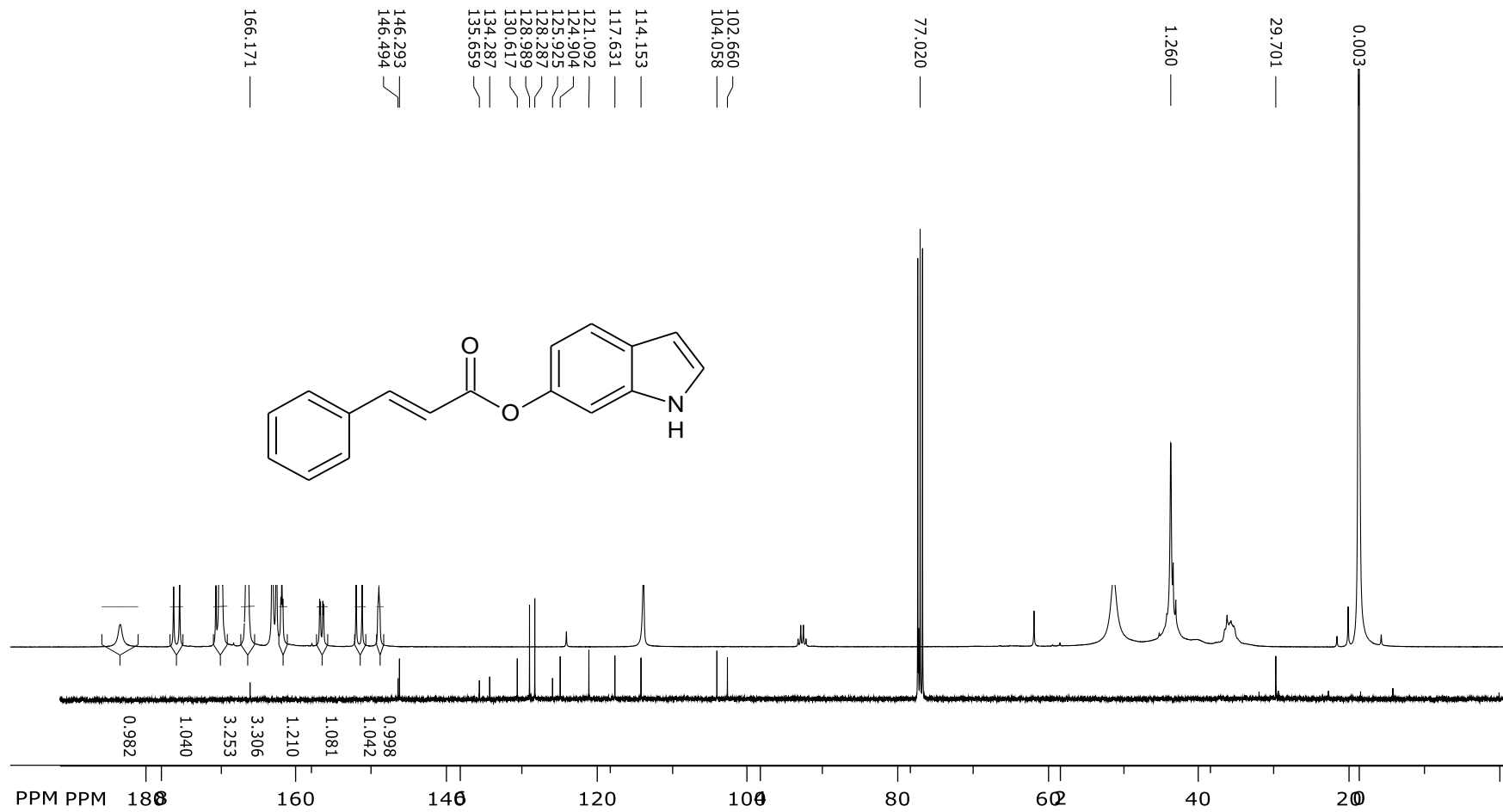


Spectrum 25: ¹H NMR Compound 3A

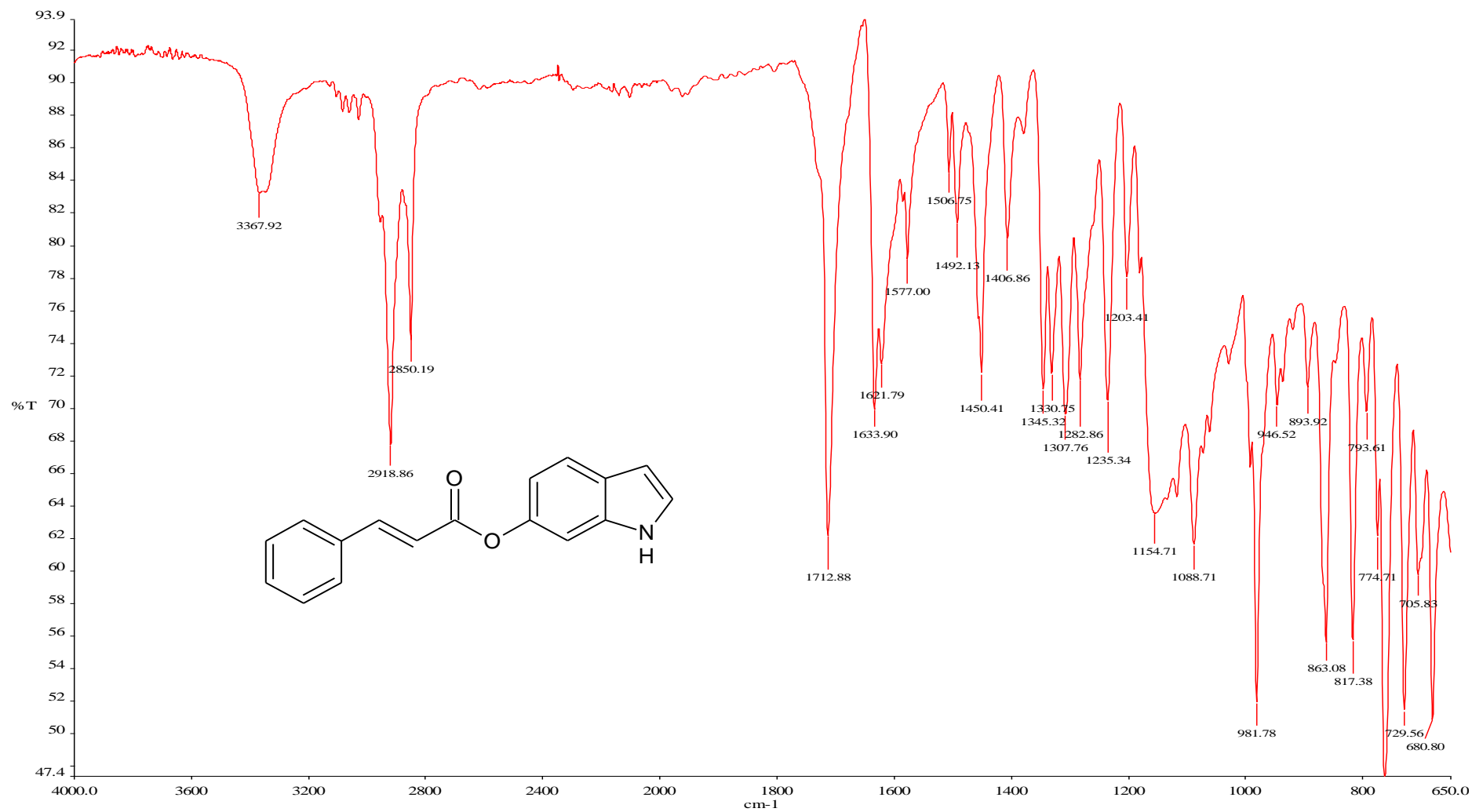
SpinWorks 4:
 PROTON CDCl₃ {C:\Bruker\TopSpin3.2} JJ-LovetoneMusakwa 14



Spectrum 26: ¹³C NMR Compound 3A



Spectrum 27: IR Compound 3A



Spectrum 28: MS Compound 3A

LM 3A

MS_Direct_191210_22 18 (0.122) Cm (13:35)

1: TOF MS ES+
1.59e4

